

*Maria Rhinehart
Court Executive Officer /
Jury Commissioner*

*Rodolfo Quintero
Director of Finance*

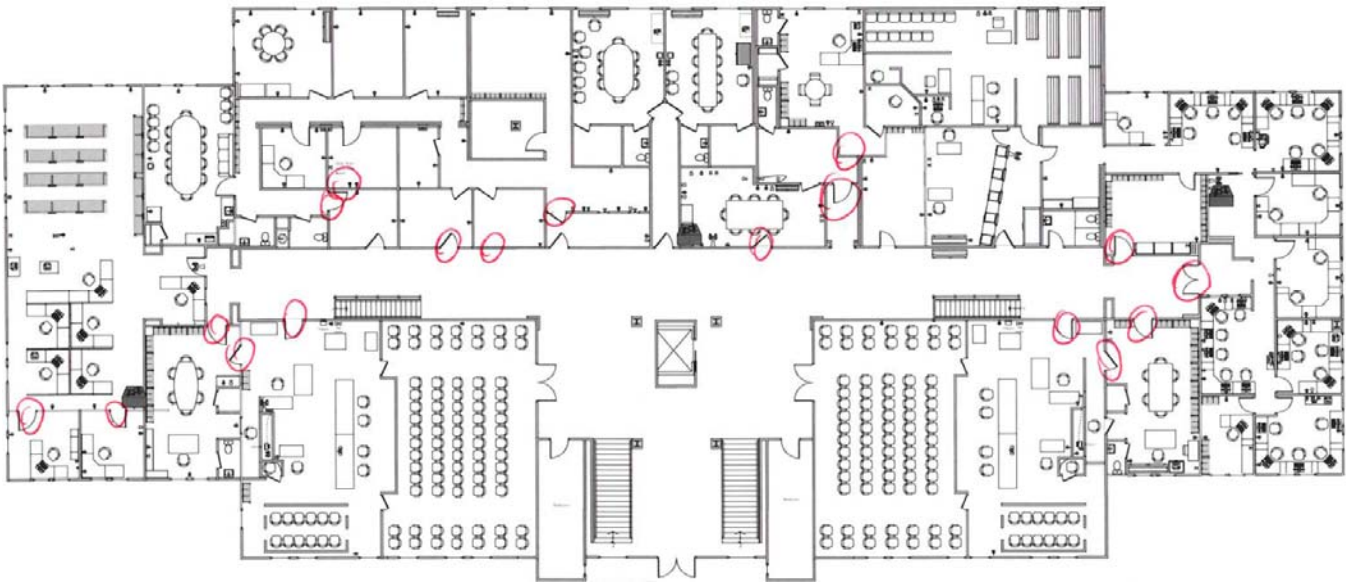



*Superior Court of California,
County of Imperial
939 W. Main Street
El Centro, CA 92243
(760) 336-3522*

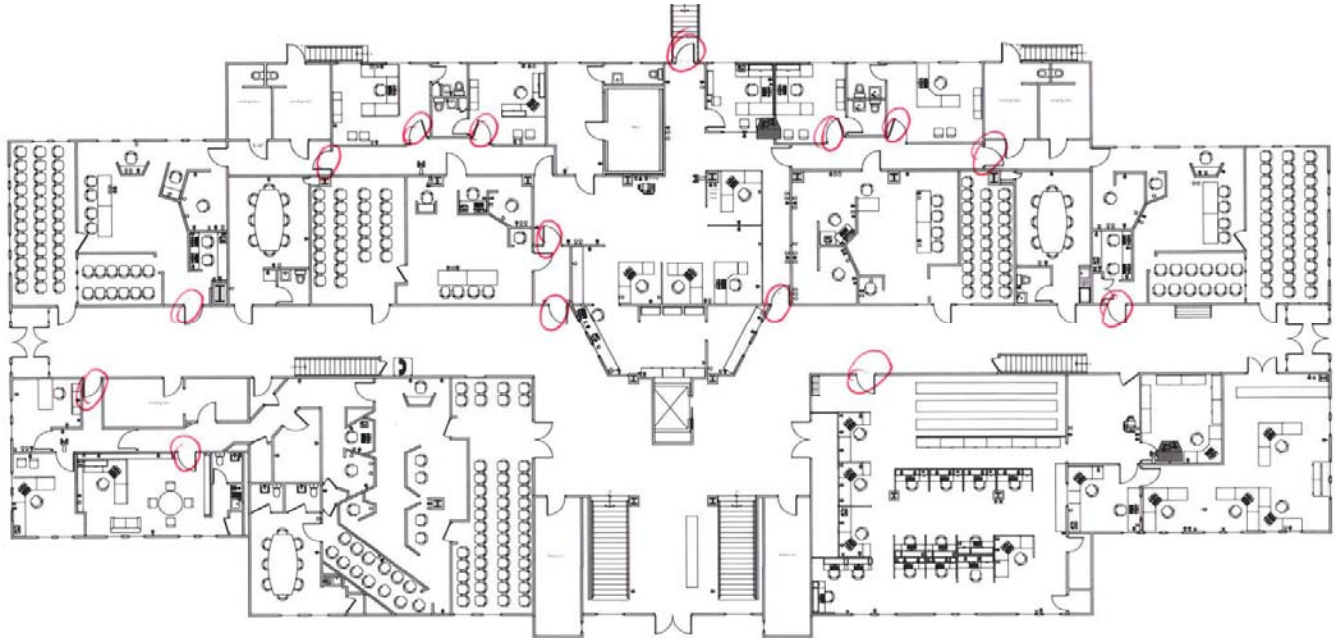
R2223-06 EC Door Access Control System RFP
Questions & Answers
issued 06/06/2023

1. Is there lead & asbestos?
There are areas that contain asbestos in the building and courtrooms. In such places, surface mounted conduit should be used for any wire.
2. Will door access keep keypad?
All mechanical keypads should be removed but maintain key core for continued physical key use.
3. Court will provide internet access for locks?
Yes, access points (IDF) are noted on diagram.
4. Have you selected the manufacturer?
No, contractor is to propose.
5. Will you want cover plates to cover old holes?
Yes.
6. Will the contractor need to patch & paint?
Yes.
7. Will keys/locks be the same as new Criminal Court?
No
8. A couple of door are badly damaged, will contractor need to replace full door?
No doors shall be replaced.
9. Will the admin still need push-button access?
Yes.
10. Does the IT server room still use/need the deadbolt?
No.
11. Will work be only after hours, weekends & holidays?
Work may be done during business hours with conditions being of not producing noise that may disrupt court proceedings and courtroom not in use when working on courtroom doors.
12. What days are Court holidays?
*The next holidays are:
Tuesday, July 4
Monday, September 4
Friday, September 22
Friday, November 10
Thursday & Friday, November 23-24
Monday, December 25*

FLOOR 2

IDF = 

FLOOR 1



BASEMENT

